

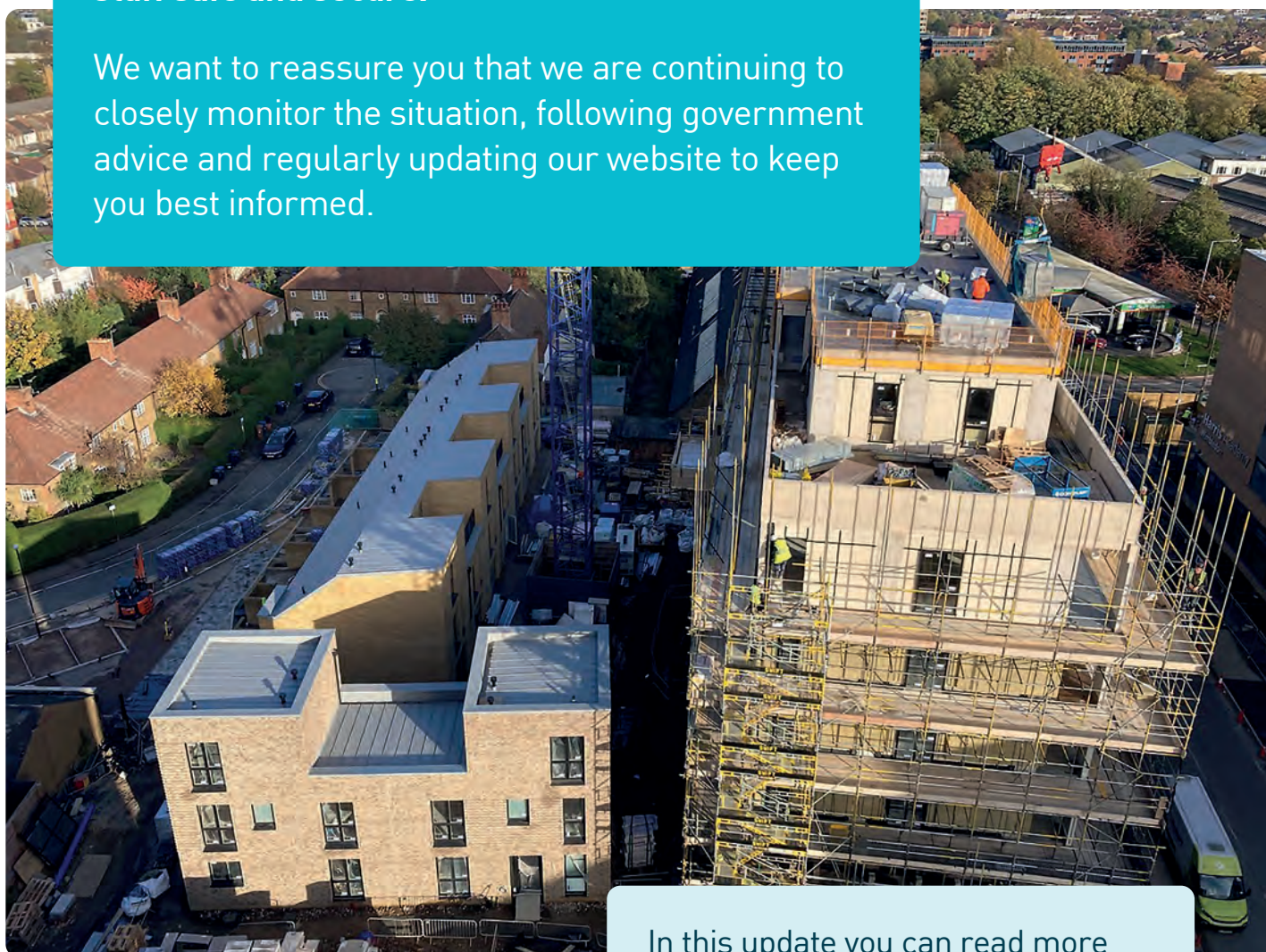


CLARION
HOUSING

High Path regeneration update

Our priority during the Coronavirus outbreak is to do everything we can to keep our residents and staff safe and secure.

We want to reassure you that we are continuing to closely monitor the situation, following government advice and regularly updating our website to keep you best informed.

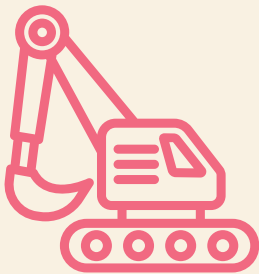


Construction on the first new homes at High Path

In this update you can read more about how construction is coming along. We also want you to get in touch if there have been changes to your housing needs.

Construction update

Construction of the first new homes is going well and we're continuing to put extra safety measures in place to manage the COVID-19 risks.

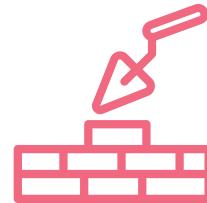


The mews houses along Rodney Place

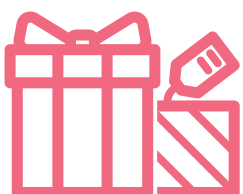
The first major milestone has been reached with the completion of the concrete frame (the skeleton of the buildings) for all blocks of flats. We are now concentrating on works to the outside of the buildings, which involves scaffolding, insulation and brickwork.

Inside the flats we are building the plasterboard walls to define the individual layouts, and installing the underfloor heating.

The brickwork on the mews houses along Rodney Place is complete and the landscaping is progressing well. Inside the houses plastering is complete and decorations will begin once the electrics are connected.



If you have any queries about construction please contact Hill resident liaison on the free phone number 0800 032 6760 or email residents@hill.co.uk



Christmas opening **hours**

The construction site will be closed over the Christmas break. The last working day on site will be **22 December** and it will reopen on **6 January**.



Hill children's Christmas competitions



All correct entries will be put into a draw with the opportunity to win one of ten £20 gift cards

To bring some festive cheer Hill have two competitions. The unscrambled word competition is for under 11's (must be accompanied by an adult) and the High Path word search is aimed at aged 11 years upwards.

To enter the competition, you must send your answer by emailing residents@hill.co.uk with the heading HIGH PATH XMAS COMP along with your child's name, age and an adult contact number.

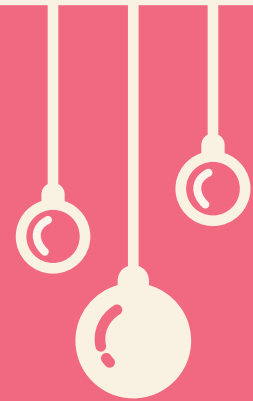
Good luck from the Hill Team.



Unscrambled word competition

We'll be placing eight large letters in the play area located behind May Court. Your job is to find all eight letters (please do not touch or remove the letters) and tell us the unscrambled word that it spells. (Clue: we all love these at Christmas).

Competition will begin from 3rd December until 18th December.



High Path word search competition



T	B	C	L	A	R	I	O	N	S	A
A	T	C	M	O	L	U	K	X	B	B
N	I	R	H	I	L	L	Z	S	T	B
O	A	D	A	E	K	P	J	J	E	E
W	R	M	T	F	S	T	I	O	F	Y
H	I	G	H	P	A	T	H	P	D	M
T	E	M	F	T	F	L	L	S	P	I
F	C	R	E	B	E	A	G	N	I	L
H	M	E	R	T	O	N	Q	A	K	L
K	G	D	L	H	A	X	I	N	R	S

Can you find which one of these words is missing?

Abbey Mills

Merton

Clarion

Safe

High Path

Trafalgar

Hill

Wimbledon

Winter 2020

Would you like to move into your new home **earlier?**

As you are aware, construction for the first new homes is underway and we are pleased that it is progressing very well. There are some surplus one, two and three bedroom flats in the first phase for leaseholders. This gives an opportunity for resident leaseholders in later phases to consider moving earlier. We expect these homes to be ready late 2021/early 2022.

If you are a resident homeowner and would like to be considered for a property in the first phase, please contact Donna Brown, your regeneration manager, by phone on **07557 846825** or email donna.brown@clarionhg.com.



Tell us if your housing needs **change**

If your circumstances change it is important that you contact Donna Brown, your regeneration manager, to confirm your household needs and discuss the location of your new home. This is to make sure we build a home suitable to your needs.

Contact us

If you have any questions or would like to arrange a meeting to discuss what regeneration means for you, please contact Donna Brown by phone on **07557 846825** or email mertonregen@myclarionhousing.com.

If you need a copy of this newsletter in large print, Braille or any other format or language please call **07557 846825**.

We welcome calls from Text Relay. If calling from a textphone, please dial **18001** and the number you wish to connect.

myclarionhousing.com/highpath



CLARION
HOUSING